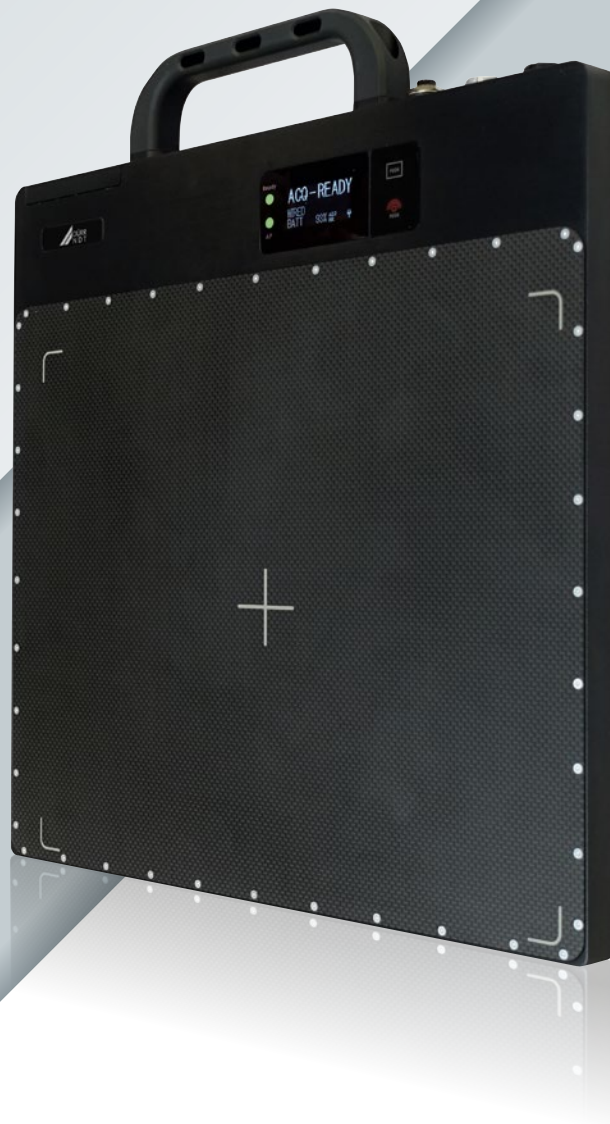


ROBUST & WIRELESS **DRC 2430 NDT**

HIGH-RESOLUTION FLAT PANEL DETECTOR



Digital Intelligence - Ready to Change.
www.duerr-ndt.com



Technical data

DRC 2430 NDT

Active area	233 mm x 291 mm (9.2" x 11.5")
Dimensions (H x W x D)	368 mm x 327 mm x 21.5 mm
Weight	3.2 kg (7 lbs)
Number of pixels	3072 x 3840
Exposure time	500 ms to 180 s
Image transfer time (wired/wireless)	2/4 s
Pixel pitch	76 µm
Scintillator	GOS
ADC	16-bit
Interface	Gigabit Ethernet, WLAN: 2.4 GHz (802.11abgn) / 5 GHz (802.11n, 2x2 MIMO)
Battery	Lithium-ion (7.4 V, 29.6 Wh)
Operating conditions	0 to 45°C (32 to 113°F), 30 to 85 % humidity
Protection level	IP67 (dust-tight and waterproof)
Housing	Aluminum frame, carbon-fiber entrance window (150 kg area load)
Software	DÜRR NDT D-Tect 9.9 or higher
Scope of supply	Detector, 2 batteries, battery charger, Ethernet adapter cable

Important features

- ✓ High resolution 76 µm pixel pitch (6.5 lp/mm)
- ✓ Suitable for X-ray and gamma sources
- ✓ Extremely robust design with handle for easy portability
- ✓ Built-in wireless access point
- ✓ Connector for Gigabit Ethernet and power
- ✓ Dust-tight and waterproof
- ✓ 1 meter drop test pass

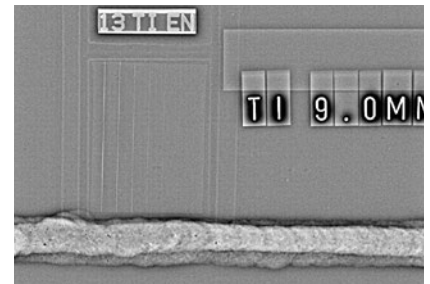


Waterproof and compact hard case for safe transportation. 10 kg (22 lbs) total weight including detector and standard scope of supply.

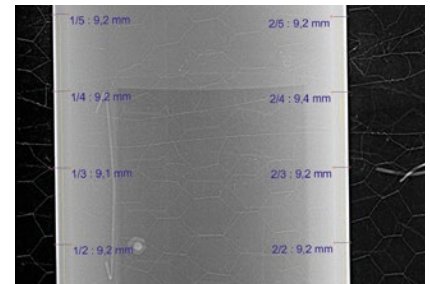


Mounting frame with adjustable lashing eyes and adapter plates for tripod mount.

Sample images



Weld seam, 9 mm titanium plate, X-ray (ISO 17636-2 Class B compliant).



Profile image, DN 150 x 9 mm, Iridium-192.