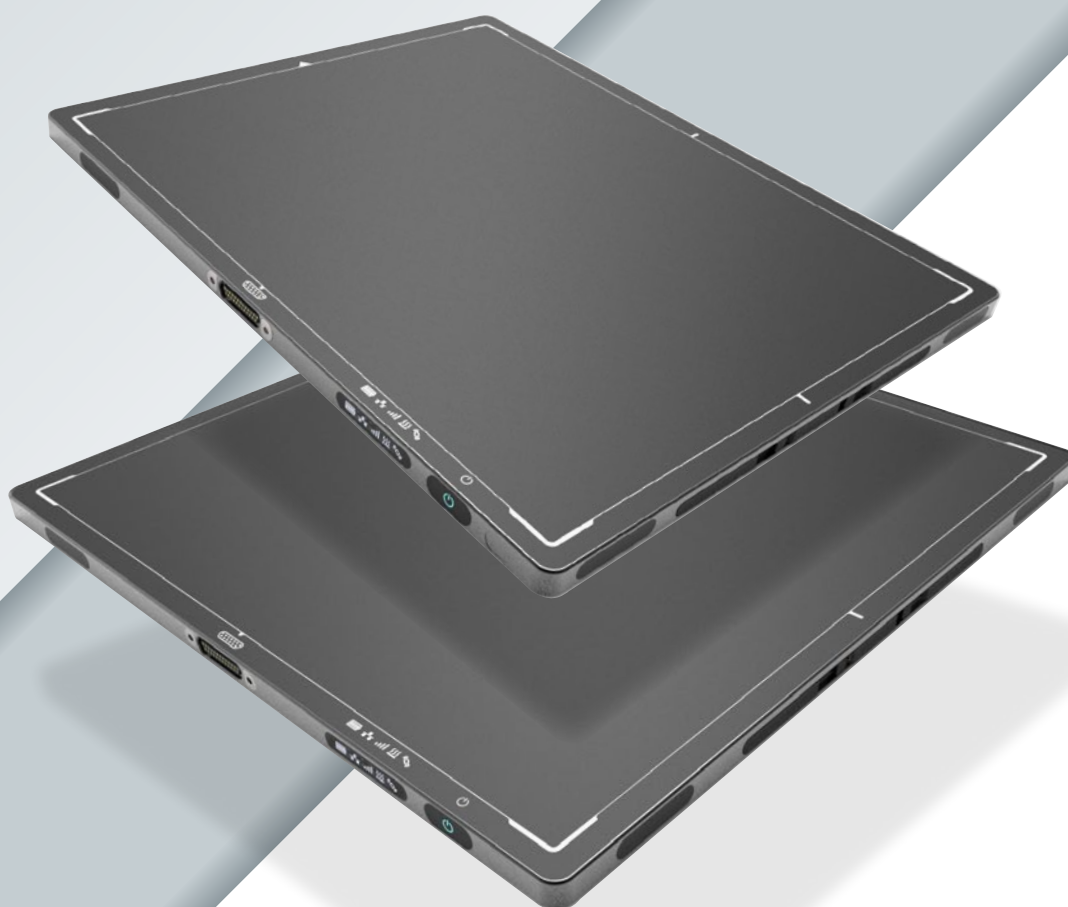


COMPACT & WIRELESS DRA 3543/4343 NDT

HIGH-RESOLUTION FLAT PANEL DETECTORS



Digital Intelligence - Ready to Change.
www.duerr-ndt.com



Technical data

DRA 3543 NDT

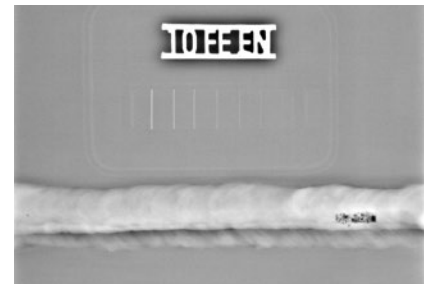
DRA 4343 NDT

Active area	350 mm x 426 mm (14" x 17")	432 mm x 432 mm (17" x 17")
Dimensions (H x W x D)	384 mm x 460 mm x 15.5 mm	460 mm x 460 mm x 15.5 mm
Weight	4.6 kg (10.1 lbs)	3.8 kg (8.4 lbs)
Number of pixels	3524 x 4288	4288 x 4288
Image transfer time (wired/wireless)	0.5/3 s	0.6/3.6 s
Max. energy	270 kV (for long life in typical applications), Isotopes (higher energies possible)	
Pixel pitch	100 µm	
Scintillator options	CsI, GOS	
ADC	16-bit	
On-board memory	1 GB DDR3, 8 GB SDHC card	
Interface	Gigabit Ethernet, WLAN (802.11n @ 5 GHz)	
Battery	Lithium-ion (46.6 Wh), charging time 3h	
Operating conditions	10 to 35°C (50 to 95°F), 20 to 80 % humidity	
Housing	Aluminum frame, carbon-fiber entrance window (150 kg area load)	
Software	DÜRR NDT D-Tect 9.9 or higher	
Accessories	Hard case, mounting frame, protection bag	

Important features

- ✓ High resolution 100 µm pixel pitch (5.0 lp/mm)
- ✓ Suitable for X-ray and gamma sources
- ✓ Built-in wireless access point
- ✓ OLED display with Wi-Fi, LAN, battery, and sensor status indicators
- ✓ Docking connector for Gigabit Ethernet, power and data sync

Sample images



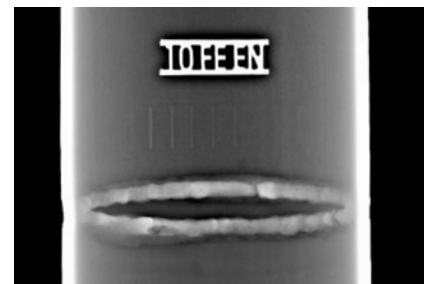
Weld seam, 6 mm steel plate, X-ray (ISO 17636-2 Class B compliant).



Waterproof hard case for detector, batteries, charger and cables.



Robust mounting frame with adjustable lashing eyes and adapter plates for tripod mount.



Double wall examination, DN 86 mm, $t = 3.6$ mm, X-ray, Elliptic technique (ISO 17636-2 Figure 11).

DÜRR NDT GmbH & Co. KG
Höpfigheimer Straße 22
74321 Bietigheim-Bissingen
Germany

info@duerr-ndt.com
www.duerr-ndt.com

